

LKE08A



新东方
NEW EASTERN TRAVEL

8D6N

Kenya Safari Adventure

肯尼亚游猎探险



KEY FEATURES

- Game drive in Lake Nakuru National Park
- Carnivore restaurant Carnivore

8D6N

KENYA

LKE08A

SAFARI ADVENTURE

DAY 1 KUALA LUMPUR - NAIROBI

(Meals On Board)

Assemble in KLIA International Airport for your flight to **Kenya**, where you will set off for **Nairobi**, the capital city of **Kenya**. Kenya is reputed as a safari paradise with some of the highest concentrations of wildlife on the planet. The country also has one of the world's biggest wildlife reserves in its rank, and a suitably comfortable climate to take it all in. Upon arrival at Jomo Kenyatta International Airport, transfer to hotel for check in and spend the rest of the day at leisure.

Hotel: Sarova Stanley Hotel or similar

DAY 2 NAIROBI - LAKE NAKURU

(Breakfast / Lunch / Dinner)

Getting a day trip to **Lake Nakuru**, hop on a super safari jeep and go looking for your favourite wildlife during the **Game Drive**. Apart from having the highest concentration of wilds, you could regularly see flocks of Lesser Flamingo, which are drawn to the algae that flourishes in the saline waters of the soda lake. Besides flamingos, this place is home to hippos, black and white rhino, Rothschild giraffe, buffalo and eland. After the game drive, transfer to lake Nakuru lodge to savour your dinner and overnight stay at the pristine lodge.

Hotel: Sarova Woodlands Hotel or similar

DAY 3 LAKE NAKURU - LAKE ELEMENTAITA - LAKE NAIVASHA

(Breakfast / Lunch / Dinner)

Today, proceed to **Lake Elementaita** to view **lesser flamingos** which has made this soda lake another of their feeding ground, there after drive to **Lake Naivasha**. Embark on a **boat ride** on this freshwater lake, renowned for its many flower farms, as Kenya stands as the largest exporter of cut roses to Europe, before reaching Naivasha's hidden treasure, **Crescent Island Game Park**. There, you'll ascend to the hilltop for breathtaking 360-degree views of the majestic lake, witnessing grazing animals against the backdrop of shimmering waters, truly epitomizing the essence of Africa at its peak.

Hotel: Lake Naivasha Simba Lodge or similar

DAY 4 LAKE NAIVASHA - MAASAI MARA NATIONAL RESERVE

(Breakfast / Lunch / Dinner)

After breakfast, depart and drive via Narok to **Maasai Mara National Reserve**, which offers wonderful scenery and plenty of games. It is perhaps the only region left in Kenya where visitors may see animals in the same abundance as a century ago. Then, arrive for lunch at your lodge before enjoying a **full-day game drive** in this vast and expansive reserve teeming with game. Be on the look out for the Big 5 that Mara is famous for and also the most sought after in the early 20th century. Killing any game will gain the hunter class, pride and heroism. Some of the famous game include the lion, cape buffalo, savannah elephant, black rhino and the elusive leopard. The vast savannah grassland, which stretch as far as the eye can see, is also home to impalas, Maasai giraffes, waterbucks, warthogs, Thompson & Grant's gazelles, topis, resident wildebeests and many others. You may also choose to join a hot-air balloon safari, which comes with a special breakfast served with champagne, at your own expense. Then, return to your lodge marvel at the amazing savannah landscape and enjoy dinner with Maasai traditional dances.

Hotel: Mara Simba Lodge or similar

Remarks:

Revisions, if any, in itinerary are subject to the
In particular, the Customer is requested to note:
• Itinerary may be subject to change due to
• Accommodation in designated cities is sub
• Sequence of itinerary may be subject to ch
• Different tour groups may be merged.
• Proposed changes, if any, that are not accep
set out in the Terms and Conditions.





Boat Ride at Lake Naivasha 奈瓦夏湖区乘船



Maasai Village 马赛村

DAY 5 MAASAI MARA NATIONAL RESERVE

(Breakfast / Lunch / Dinner)

Enjoy breakfast before proceeding for another **full day of game-viewing drives** and adventure. Be on the look out for the Big 5 that Maasai Mara is famous for. You may even be so lucky to witness a leopard or a cheetah sprint and make a kill! Then, experience how the Masai people live in the middle of the bush with zebras grazing and lions roaring just outside their homes and get to know their culture and customs on a visit to the Traditional **Maasai Village**. The majority of Maasai still practice their traditional way of life and live as pastoralists with cattle at the centre of their culture and social life. They are very proud to welcome guests and share stories about their everyday life in the bush.

Hotel: Mara Simba Lodge or similar

DAY 6 MAASAI MARA NATIONAL RESERVE - NAIROBI

(Breakfast / Lunch / Dinner)

This morning, take a short flight back to Nairobi (avoid 8 hours of bumpy ride on road), upon arrival visit to the **Giraffe Center**. Enjoy the opportunity to feed and learn about the endangered Rothschild giraffes. Don't forget to take plenty of photos! Head over to the **Utamaduni Handicraft Center** to explore a wide range of traditional African crafts and Souvenirs. This is a great place to pick up unique gifts and support local artisans. Tonight enjoy an African Barbecue Dinner at Carnivore restaurant.

Hotel: Best Western Plus Hotel or similar

Note: Specific restaurants mentioned will be replaced, if closed for private functions

DAY 7 NAIROBI - KUALA LUMPUR

(Breakfast / Meals on Board)

Today, visit to a **coffee plantation**. Learn about the entire process from planting coffee plants to harvesting seeds and processing the coffee. Enjoy a guided tour and perhaps even a coffee tasting session. If time permits, do some last-minute shopping. Look for local markets or shops where you can buy souvenirs, local crafts, or any other items you want to bring back home. before you transfer to the airport for your flight back home

DAY 8 ARRIVE KUALA LUMPUR

Company's Terms and Conditions.
te the following:
circumstances beyond the Company's control.
ject to room availability.
ange.

pted will be subject to the refund provisions

8天6晚

肯尼亚游猎探险

LKE08A

DAY 1 吉隆坡 - 内罗毕

(机上用餐)

抵达乔莫肯尼亚塔国际机场后，送往酒店办理入住手续，并自由活动。

DAY 2 内罗毕 - 纳库鲁湖国家公园

(早餐/午餐/晚餐)

今早，乘坐4驱轮吉普车前往**纳库鲁湖国家公园**，位于肯尼亚裂谷省首府纳库鲁市的南部，也是东非最大的国家公园之一。乘坐吉普车去寻找您最喜欢的野生动物。除了拥有最高的野生动物密度外，您还经常可以看到成群的小红鹤。它们被吸引到苏打湖的咸水中藻类茂盛的水域中。除了火烈鸟，这个地方还是河马、黑白犀牛、罗斯柴尔德长颈鹿、水牛和羚羊的家园。

DAY 3 纳库鲁湖国家公园 - 埃尔门泰塔湖 - 奈瓦夏湖区

(早餐/午餐/晚餐)

今天，前往**埃尔门泰塔湖**，观赏小红鹤，它们已经把这片苏打湖当作另一个觅食地。然后，驱车前往**奈瓦夏湖**。位于肯尼亚的纳库鲁县，是大裂谷湖泊中最高、大裂谷仅有的两个淡水湖之一。在纸莎草和洋槐树的环绕下，这个华丽的环境是一个独特的地质景观，超过450种鸟类。奈瓦沙湖以其众多花农场而闻名，肯尼亚是向欧洲出口切花玫瑰最大的国家，然后乘船到奈瓦夏神秘的**新月岛**野生动物园探索。该湖泊是该地区野生动物的主要水源，如斑马、麋鹿、河马、水牛、水牛以及更多的动物，它们都是在这喝水。游客可以期待夜间游猎和环湖划船游览，以及到美丽的新月岛观鸟。

DAY 4 奈瓦夏湖区 - 马赛马拉动物保护区

(早餐/午餐/晚餐)

早餐后，启程经纳洛克前往**马赛马拉国家保护区**，这里景色优美，野生动物丰富。也许马赛马拉是肯尼亚唯一一片游客可以看到与一个世纪前一样丰富野生动物的地区。然后在这个广阔而辽阔的保护区进行全天游戏驱动，这里充满了野生动物。留心马赛马拉以及20世纪早期最受追捧的大五动物。猎杀任何动物都将使猎人获得阶级、自豪和英雄主义。一些著名的野生动物包括狮子、非洲水牛、非洲草原象、黑犀牛和难以捉摸的豹子。广袤的大草原一望无际，也是斑羚、马赛长颈鹿、水羚羊、疣猪、汤普森和格兰特斑羚、托皮斯、常驻角马等动物的家园。您还可以选择参加热气球野生动物园，费用自理，享用特别的早餐和香槟。然后返回小屋，欣赏令人惊叹的大草原风景，并享用马赛人的传统舞蹈晚餐。

DAY 5 马赛马拉动物保护区

(早餐/午餐/晚餐)

在享用早餐之后，让您再度体验另外1次乘坐吉普车之动物大迁移猎游。继续进行全天的野生动物观赏和冒险活动。留心马赛马拉以大五动物而闻名。您甚至可能会幸运地目睹豹子或猎豹的短跑并捕食！与牛羚群可以碰面，留意草群里头的狮子、猎豹、犀牛、鳄鱼和还有在河里面的河马。然后返回营地享用晚餐。

DAY 6 马赛马拉动物保护区 - 内罗毕

(早餐/午餐/晚餐)

今天早上，参观传统的**马赛村庄**，了解他们的文化和习俗。并分享他们在丛林中的日常生活故事，大多数马赛人仍然保持着他们的传统生活方式，斑马在他们家外吃草，狮子在附近咆哮，以牛群为文化和社会生活中心的牧民。男子会表演 猎杀、祭祀、著名的跳高3种传统舞蹈，以及钻木取火技巧；女子则会 吟唱表示欢迎，及祈求多子女、多牲畜的祈福歌曲。在傍晚时分，乘塔内航航班返回内罗毕。抵达后带您到Carnivore野味风味餐厅享用非洲烧烤晚餐，它列明为世界著名的野味肉盛宴。

注：如以上特定餐馆因私人活动关闭将以其他餐馆替代。

DAY 7 内罗毕 - 吉隆坡

(早餐/机上用餐)

今天，参观**咖啡种植园**。了解从种植咖啡树到收获种子和加工咖啡的整个过程。若时间允许，您可自由活动至集合时间，然后送往机场搭乘客机回返吉隆坡。

DAY 8 抵达吉隆坡



Game drive in Lake Nakuru National Park 吉普车去探索野生动物



备注：
行程若更改，需受公司的条款与细则所约束。顾客尤其需注意以下事项：
• 在公司无法控制的情况下，行程可能更改。
• 指定城市的住宿需视客房供应情况而定。
• 行程顺序可能更改。
• 不同团体可能合并成一团。
• 若有更改不被接受，需遵守条款与细则中的退款规定。



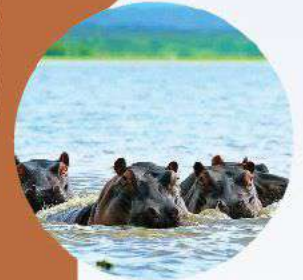
View lesser flamingoes 埃尔门泰塔湖

The smallest flamingo in the world, with a dark bill and red legs. Note glowing red eyes in adults. Juveniles are gray-brown and darker than young Greater Flamingos. Found in alkaline lakes and coastal lagoons, where gathers in huge flocks to eat microscopic blue-green algae. Breeds on remote flats sheltered from predators. Migrates and breeds in response to changing environmental conditions.



Game Drive in Lake Nakuru National Park
吉普车去探索野生动物

Lake Nakuru National Park is ideal for bird watching, hiking, picnic and game drives.



Crescent Island 新月岛

There is just one "Crescent Island Game Sanctuary". Located on Lake Naivasha, in the Great Rift Valley, Kenya. It is one of the most beautiful parks in Kenya and is often called Naivasha's best-kept secret. Perfect for Wildlife Watching, Bird Enthusiasts, and all fans of the wilderness.



Lake Nakuru 1, Lake Elementaita 1, Lake Naivasha 1, Nairobi 2, Maasai Mara National Reserve 1



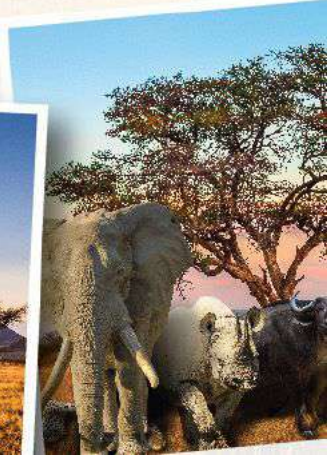
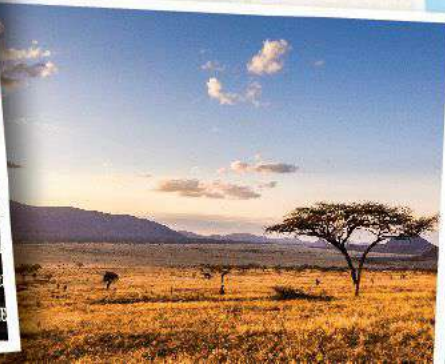
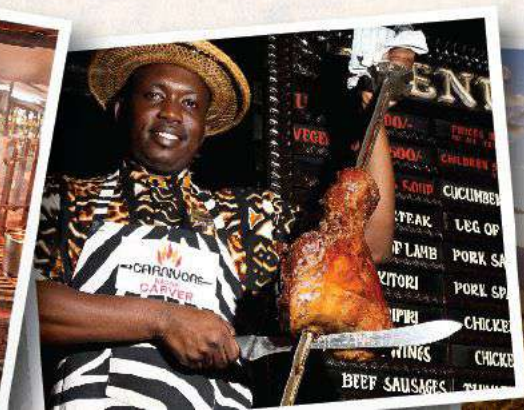
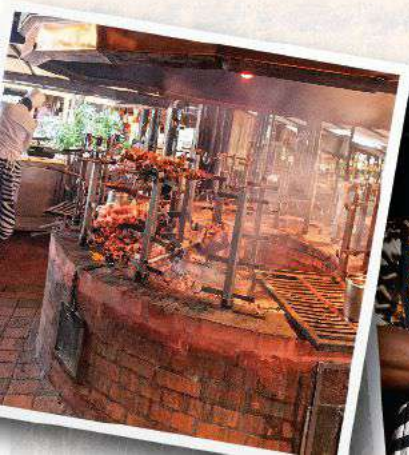
Maasai Village 马赛村

Arguably the most iconic tribal group in all of Africa, the Maasai, who populate vast areas of Southern areas of Kenya are the dominant ethnic group surrounding the Masai Mara. This nomadic, warrior tribe which once held vast swathes of pre colonial Kenya, still retain many of their traditions as they live largely untouched by modern day civilization, in areas surrounding Masai Mara.



Coffee Plantation 咖啡种植园

Learn about the entire process from planting coffee plants to harvesting seeds and processing the coffee.





Full Day Of Game-Viewing Drives 乘坐吉普车之动物大迁移猎游

TOUR HIGHLIGHTS 旅游亮点

Kenya 肯尼亚

Lake Nakuru 纳库鲁湖国家公园

- Game drive in Lake Nakuru National Park
吉普车去探索野生动物

Lake Elementaita 埃尔门泰塔湖

- View lesser flamingoes 埃尔门泰塔湖

Lake Naivasha 奈瓦夏湖区

- Lake Naivasha Boat ride 奈瓦夏湖区乘船
- Crescent Island 新月岛

Maasai Mara National Reserve 马赛马拉动物保护区

- 2 Full day Game Drive
2 场马赛马拉国家野生动物保护区狩猎游
- Maasai Village 马赛村

EXCLUSIVE EXPERIENCES 独特体验

- Game drive in Lake Nakuru National Park
吉普车去探索野生动物
- Boat Ride at Lake Naivasha 奈瓦夏湖区乘船
- View lesser flamingoes 小红鹳
- 2 Full day Game Drive in Maasai National Park
2 场马赛马拉国家野生动物保护区狩猎游
- 1 Way Domestic flight from Maasai Mara to Nairobi
单程内陆航班

All Local 4* Hotel 全程入住当地四星级酒店

- Nairobi - Sarova Stanley Hotel or similar
- Lake Nakuru - Sarova Woodlands Hotel or similar
- Lake Naivasha - Lake Naivasha Simba Lodge or similar
- Maasai Mara National Reserve - Mara Simba Lodge or similar
- Nairobi - Best Western Plus Hotel or similar

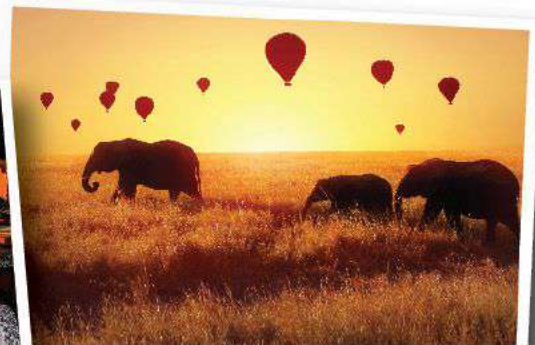
*Accommodation in designated cities is subject to room availability, and alternatives may be provided if necessary.

SPECIALTY MEAL 特色餐点

- Carnivore restaurant Carnivore 特色野味餐厅

16 Meals Included 包含16餐

- 6 Breakfasts 早餐
- 5 Lunches 午餐
- 5 Dinners 晚餐



新东方国旅有限公司
NEW EASTERN
TRAVEL & TOURS SDN. BHD.
202501014606 (1616020-H)

C-3-2, Kuchai Exchange, No. 43,
Jalan Kuchai Maju 13,
Off Jalan Kuchai Lama,
58200 Kuala Lumpur,
Malaysia

Telephone: +6 011 6919 6099

Email: enquiry@neweasterntraveltour.com

Website: neweasterntraveltour.com

Facebook: neweasterntraveltour

